
Formula Renault 2.0 Northern European Cup
DMSB Genehmigungs-Nummer: 505/14

Bulletin N° 09, 2014

Teil 2 Technisches Reglement

2.7 Räder und Reifen

Slick Tyres

Typ: RST 2.0 oder S 412

Bei der sechsten Veranstaltung in **Most** (29.-31.08.2014) können pro Fahrzeug (Startnummer) für die Dauer der Veranstaltung (d. h. freies Training, Qualifying und Rennen) folgende neue Slick- Reifen verwendet werden:

6 vorne, mit der Startnummer/ Event markiert

6 hinten, mit der Startnummer/ Event markiert

Bei der sechten Veranstaltung in **Most** können pro Fahrzeug (Startnummer) für die Dauer der Veranstaltung (d. h. freies Training, Qualifying und Rennen) folgende gebrauchte/ bereits markierte Slick-Reifen verwendet werden:

4 vorne, mit der Startnummer/ Event markiert

4 hinten, mit der Startnummer/ Event markiert

EuroCup Nomenclature

Die folgende Aktualisierung der Nomenclature wird aus dem EuroCup übernommen (siehe Anhang):

EVO_1_Nom_FR20_2014_EN_02062014.pdf

Part 2 Technical reglement

2.7

Slick Tyres

Type: *RST 2.0* or S 412

For the sixth event in **Most** (29.-31.08.2014) new slick tyres may be used per vehicle (start number) for the duration of the event (i.e. free test, qualifying and races 1 and 2):

- 6 front, marked with start number.
- 6 rear, marked with start number.

The following slick tyres, already marked from a previous NEC event, may be used per vehicle (start number) for the duration of the sixth event in **Most** (i.e. free test, qualifying and races 1 and 2):

- 4 front, marked with start number.
- 4 rear, marked with start number.

EuroCup Nomenclature

We add to the Northern European Cup Formula Renault 2.0 regulations the following update for the Nomenclature (attached):

EVO_1_Nom_FR20_2014_EN_02062014.pdf

All official changes, being sporting, technical or technical rules or in attachments, will be posted on www.necup.com throughout the 2014 season.

Best regards

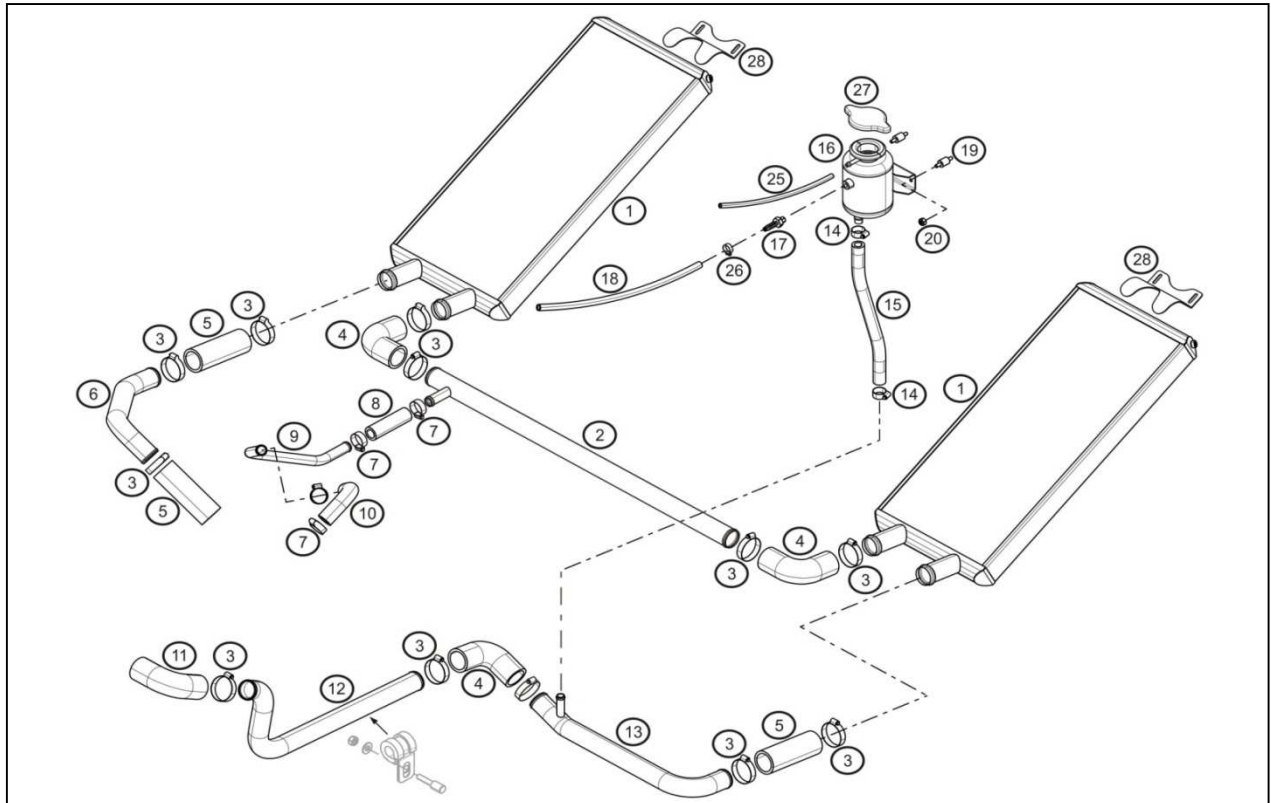
Ralph Weishaupt
Renault Deutschland AG

Freigabe durch den DMSB
Approved by the ASN



25.06.2014


Kai Zimmermann



	A	B	C
1		X	
2		X	
3			X
4			X
5			X
6		X	
7			X
8			X
9		X	
10			X
11			X

	A	B	C
12		X	
13		X	
14			X
15		X	
16	X		
17	X		
18		X	
19	X		
25		X	
27	X		
28	X		

1B : Water radiator

It is allowed to:

- improve sealing between radiators and their support.
- improve their fitting.

2B – 6B – 9B – 12B – 13B : Water pipes

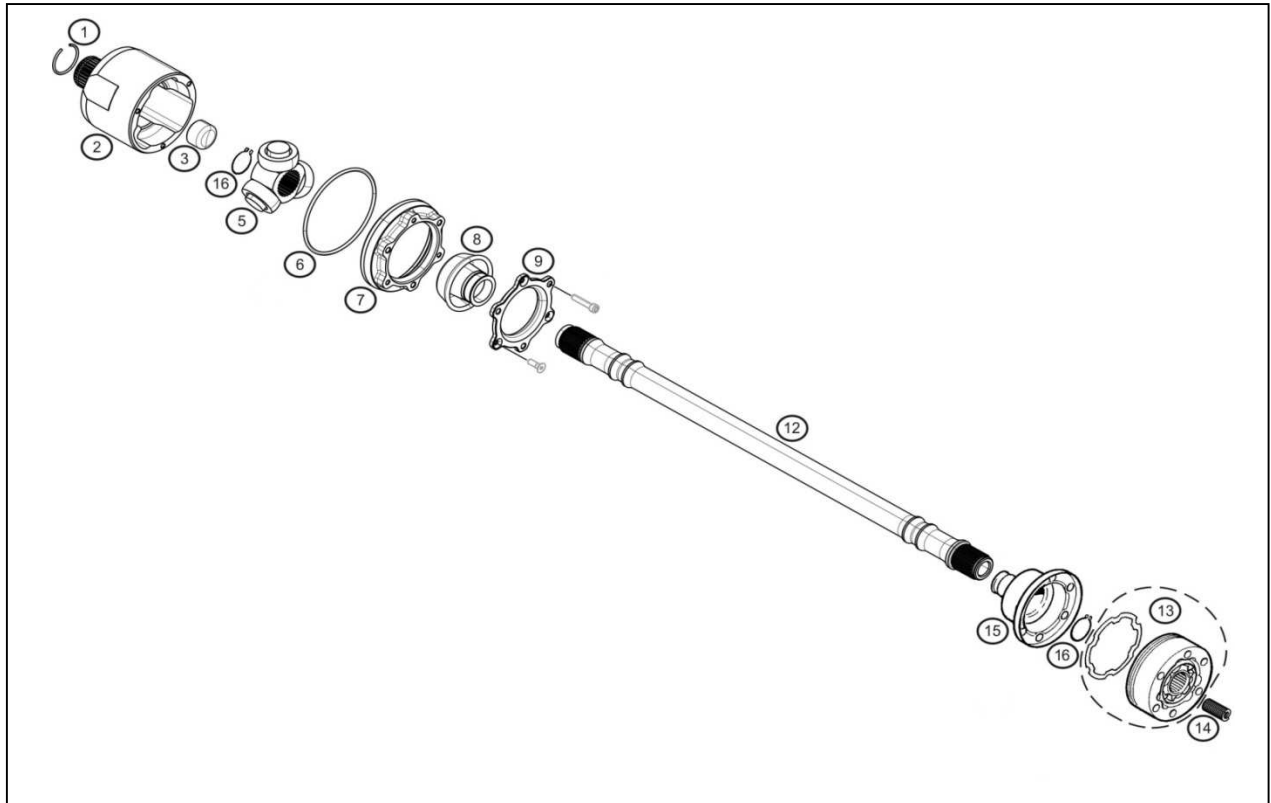
It is allowed to fit a wrap sheathing protection on the pipes.

15 B : Water hoses

It is allowed to fit a wrap sheathing on this hose.

18B – 25B : Rubber hoses

The rubber hoses are free but the internal diameter of the replacement hoses cannot be smaller than the diameter of the original ones.



	A	B	C
1	X		
2		X	
3	X		
5	X		
6	X		
7	X		
8	X		
9	X		
12		X	
13		X	
14	X		
15	X		
16	X		

2B Output flange :

Two types of output flange are allowed :
 - ref : 01 01 910 707
 - ref : 01 19 107 001

12B : Drive shaft

It is allowed to polish the driveshaft. No other treatment is allowed
 The genuine engraving with the part reference must still be readable.

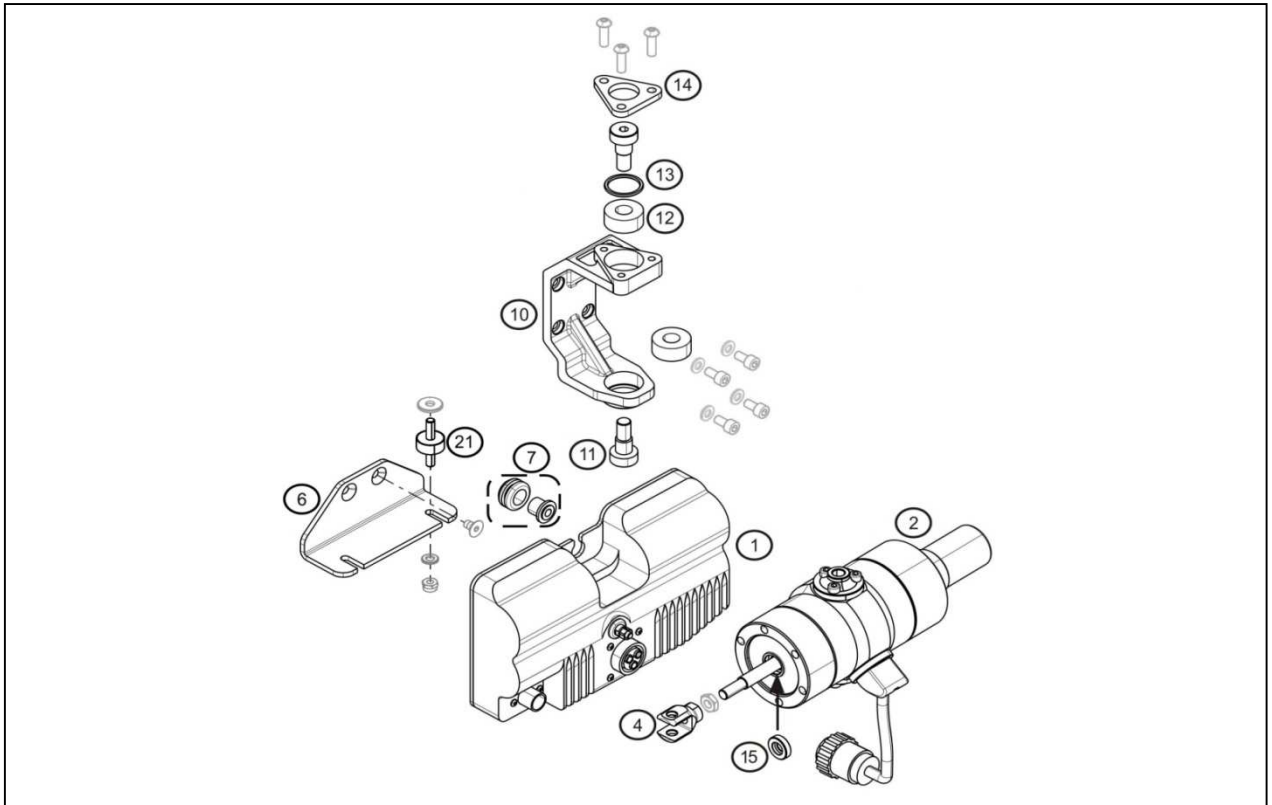
13 B : Drive shaft Constant velocity joint

The joint can be mounted in both ways.
 It is allowed to remove the Drive shaft constant velocity joint

NOMENCLATURE
TECHNICAL REGULATIONS 2014

38.00

March 28th, 2014



	A	B	C
1	X		
2		X	
4	X		
6	X		
7			X
10	X		
11	X		
12	X		
13	X		
14	X		
15	X		
21	X		

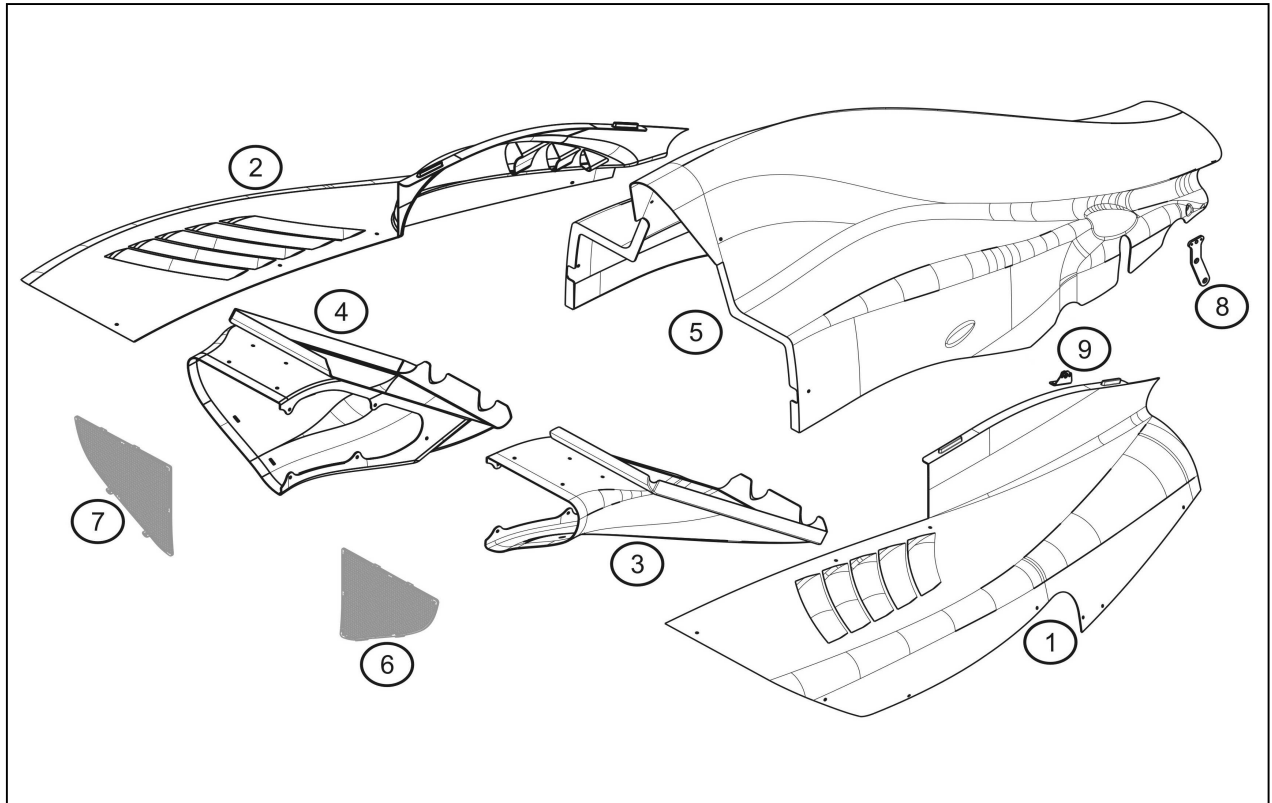
2B : Gearbox actuator

Only the reinforced actuator supports ref. 77 11 166 586 are allowed.

**NOMENCLATURE
TECHNICAL REGULATIONS 2014**

43.00

June 2nd, 2014



	A	B	C
1		X	
2		X	
3		X	
4		X	
5		X	
6		X	
7		X	
8	X		
9	X		

1B - 2B - 3B - 4B - 5B : Bodywork

It is allowed to repair without change of weight or dimension.

1B - 2B - 5B : Sidepods and engine cover

It is allowed too add adhesive tape on the fasteners. This tape must only secure the fitting and cannot bind two elements together.

1B - 2B : Sidepods

it is allowed to add a protective and sealing gasket between the sidepods and the chassis.

It is allowed to trim the upper part of the left hand sidepod to avoid any potential contact with the "Staübli" connector of the engine.

3B - 4B : Radiator ducts

It is allowed to add gaskets or adhesive tape between the ducts and the chassis. The gaskets or adhesive tape must not bind two elements together.

5B : Engine cover

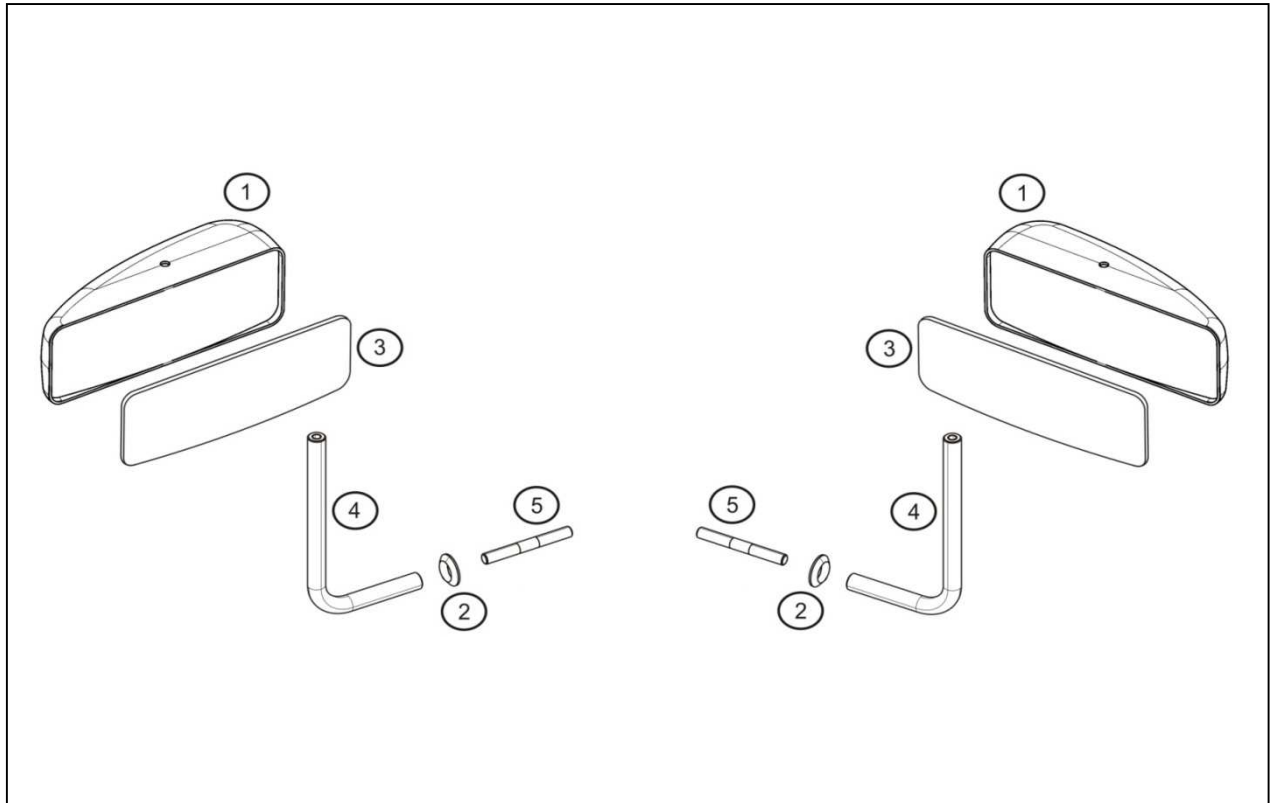
It is allowed to improve the engine cover fitting in its pick-up point area.

6B - 7B : Radiator nets

A screen or tape can be placed on the nets to regulate engine temperature. It is allowed to link the radiator nets and the ducts with tape.

It is allowed to repair the radiator nets respecting the original dimensions and functions of the complete part.

Reinforcements are not allowed.



	A	B	C
1		X	
2		X	
3		X	
4		X	
5			X

1B : Mirror housing

They must be painted following the 2014 official identification plans.

2B : Washers

It is allowed to add rubber washers between the part 2 and chassis.

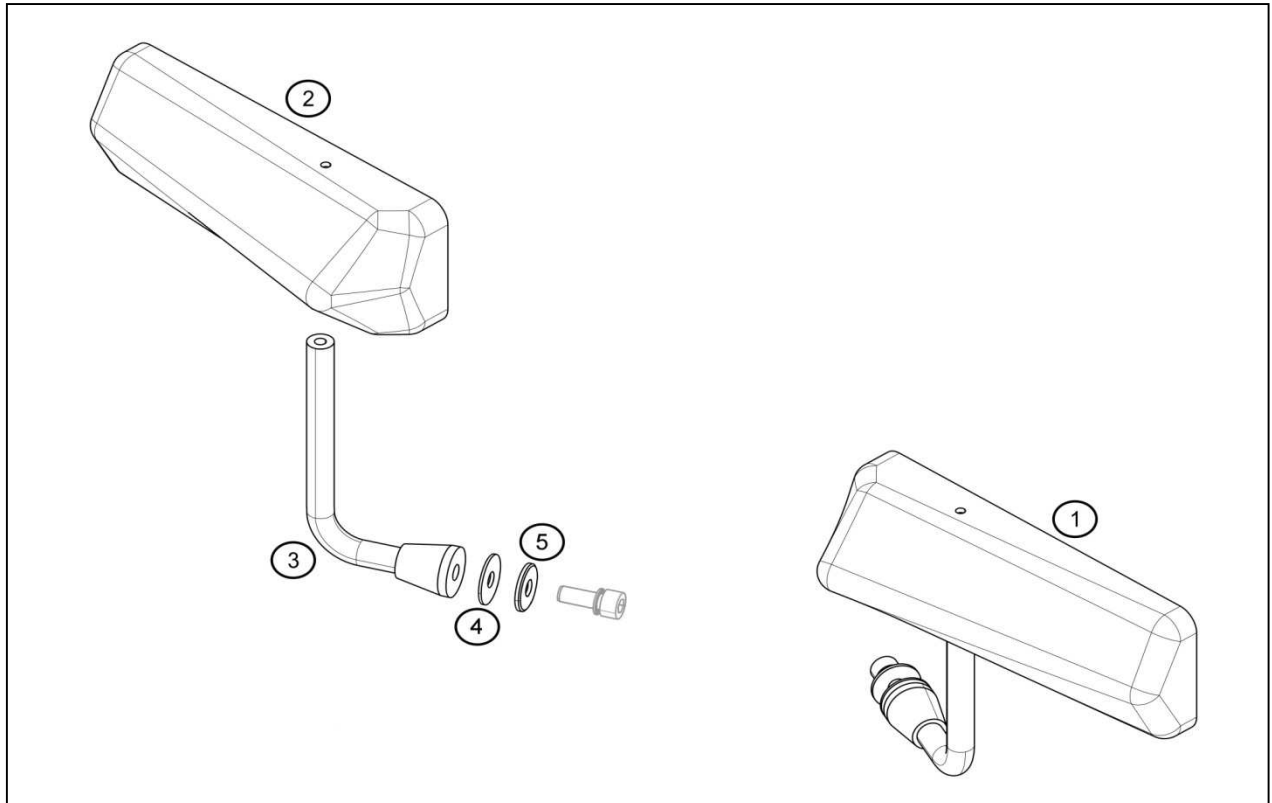
3B : Mirrors

It is allowed to mount :

- Convex mirrors ref: 7711165386 & 7711165387
- flat mirrors ref: 7711159254 & 7711159255

4B : Mirror stay

It is allowed to modify the stay length.



	A	B	C
1		X	
2		X	
3		X	
4			X
5	X		

1B – 2B : Mirror housing

They must be painted following the 2014 official identification plans.

It is allowed to mount mirror housing with :

- Convex mirrors ref: 7711165882 & 7711165883
- flat mirrors ref: 7711165880 & 7711165881

3B : Mirror stay

It is allowed to modify the stay length.